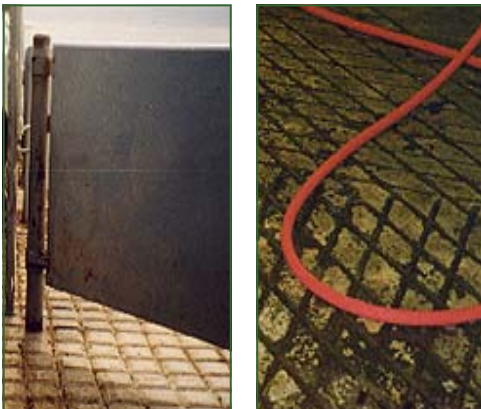


LIVESTOCK HANDLING FACILITIES

EASE OF MOVEMENT FOR YOU LESS STRESS FOR YOUR LIVESTOCK



Animal handling and welfare is becoming an increasingly important issue to consumers, and major meat buyers. We make it our business to stay informed about the best livestock handling techniques from around the world.

Rough handling or poorly designed equipment is detrimental to both animal welfare and meat quality. Meridian can design facilities for you and your livestock that will minimize stress levels, improve efficiency and maintain good meat quality.

Stressed animals cause meat quality problems (such as dark cutters in cattle). This is a major cause of large monetary losses to the livestock industry. Gentle handling of animals through well-designed facilities will reduce or eliminate electric prod usage. This in turn will lower the stress to your livestock and increase your yields.

Meridian can provide on-site consultations to assess your needs. Our understanding of the behaviour of livestock will facilitate handling, reduce stress, and improve both handler safety and animal welfare. We can provide you with the facilities that will allow you to use 'low-stress' techniques or modify your existing facilities to better handle livestock.

Quiet processing of livestock is next to impossible if animals slip or fall during handling. Animals tend to panic if they slip even a little bit. Livestock become agitated due to the slipping while standing in a race, or chute. Meridian can assess your location and provide the correct flooring and safety guards for you and your livestock.

- On-site consultation
- Custom made to your needs
- Low-stress livestock management
- Efficient, comfortable movement through the yards
- Ease of movement for handlers
- Takes advantage of the livestock's natural following behaviour patterns
- Calm restraint devices

“Reducing stress during handling will improve productivity and prevent physiological changes that could confound research results or lower productivity. Handling stresses lower conception rates and reduces both immune and rumen function. Handlers who understand livestock behaviour can reduce stress.”

(Temple Grandin)

**PHONE:
1 300 366 196**

MERIDIAN CAN HELP YOU ADHERE TO ALL OF THESE ELEMENTS TO DECREASE THE STRESS ON LIVESTOCK AND INCREASE YOUR YIELD

1. Meridian's livestock handling facilities can be fitted with sides or barriers around the cattle to prevent the animals from seeing people deep inside their flight zones. This is especially important for wild or excitable cattle.
2. Non-slip flooring can be laid to lessen the stress on the livestock.
3. The entrance of the crush must be well lit. All livestock must be able to see a place to go. When they can see they move forward in a calmer manner.
4. The crush must be designed to avoid uncomfortable pressure points on the animal's body.
5. Livestock will remain calmer if they can see other animals within touching distance.
6. The equipment Meridian uses has been engineered to minimize noise. High pitched noise is most disturbing to livestock.
7. Smooth surfaces (eg gates, fences, chutes) can be used to avoid bruising your livestock and damage to the hide.
8. Animals become uncomfortable when they see a drop-off. Meridian is able to install a false floor under the restrainer to prevent this from occurring.



TIPS FOR GOOD LIVESTOCK MANAGEMENT

- Keep animals calm. Calm and quiet animals move more easily.
- Do not allow the animals to slip.
- Know your flight zones and points of balance.
- Small groups move more easily.
- Keep working areas well lit.
- Install false floors.
- Avoid bruising.
- Calm animals are easier and safer to handle.
- Less stress to your livestock means less stress on your wallet!



**MERIDIAN RURAL
PROPERTY SERVICES**

PO Box 4
Moss Vale NSW 2577
Australia

Phone: 1 300 366 196

Fax: 1 300 664 375

E-mail: info@meridian.com.au